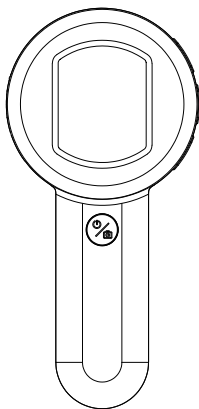


2.0寸手持显微镜

型号: HM020



快速入门指南 V3.0

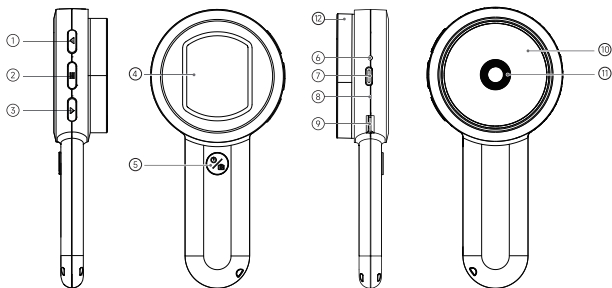
请仔细阅读本使用说明书，并妥善保管，以备日后参考。

目录

1. 各部件及功能	02
各部件及功能介绍.....	02
2. 界面介绍及使用	04
菜单模式.....	04
功能说明.....	05
3. 如何连接电脑使用	06
软件下载.....	06
连接步骤.....	07
USB模式介绍.....	08
4. 产品参数	09
5. 注意事项	10

1. 各部件及功能

平面图仅供参考，具体请以实物为准



• 各部件及功能介绍

部件编号	功 能
1	上选择键
2	菜单键
3	下选择键
4	显示屏
5	电源/拍照/确认键
6	指示灯
7	Type C接口
8	复位按键
9	TF卡插座
10	LED补光灯
11	摄像头
12	透明罩

上选择键: 在设置或者相册中为上选择作用,在预览时可进行数码放大。

菜单键: 短按进入菜单。

下选择键: 在设置或者相册中为下选择;在预览时短按可切换白紫两组灯光。

显示屏: 2.0寸IPS显示屏。

电源/拍照/确认键: 长按3秒开机/关机;短按拍照;

预览模式时,短按为拍照键;

设置模式时,短按为确认键。

指示灯: 开机时蓝色工作指示灯常亮,关机熄灭。

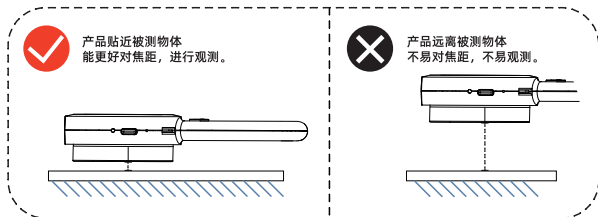
充电时指示灯为红色长亮,充满后指示为绿色常亮。

Type C 接口: 标准USB2.0接口,此接口支持充电和数据传输。

复位按键: 显微镜异常时,用细尖物戳此孔,可强制关机。

TF卡插座: 支持最大32G内存卡。(注:请选用C10高速卡)

LED 补光灯: 有白光,UV光两组灯可切换。



2. 界面介绍及使用

(注: 在使用显微镜前, 为确保图片文件更好的储存, 请先将TF卡插入放大镜)

• 菜单模式

短按显微镜上的菜单键, 进入菜单模式, 如下图所示:



在图库中查看文件时, 长按菜单键返回上一步, 短按菜单键, 可对当前/全部图片文件进行删除, 如下图所示:



• 功能说明

图库:可查看已拍摄的图片。

分辨率:有16M, 12M, 10M, 8M, 5M, 3M, 2MHD共7种分辨率可选择。

语言:可设置放大镜语言, (有英语, 葡萄牙语, 简体中文, 日语, 法语, 德语, 韩语, 意大利语, 荷兰语, 俄语, 西班牙语, 阿拉伯语)。

屏幕亮度:可以根据需要调节8个屏幕亮度挡位。

自动关机:选择自动关机时间后, 显微镜将在无人操作时自动关机; 无需自动关机, 请选择“关”。

屏幕保护:选择合适的时间, 设备在无人操作时息屏。

格式化:此操作将删除TF卡内所有数据。
(注: 删除后将无法恢复, 请谨慎操作)。

恢复出厂设置:恢复出厂默认设置。

固件版本:可查看当前固件版本。

3. 如何连接电脑端使用

• 软件下载

注：以下三种方式均可进行下载，请根据电脑系统选择适用的版本。

- ① 请从以下网址下载适用软件：<http://soft.hvscam.com>（适用于：Windows 7, Windows 8.1, Windows 10, Windows 11及Mac）

 简体中文 |  English

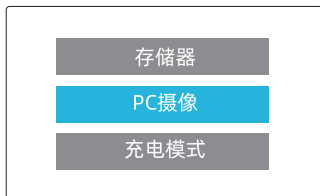
-  显微镜测量软件 HiViewSetup 1.4 for mac
支持: S4 X4 W01 DM3 DM4 DM7 DM8 DM9 MS1 MS2 MS3 MS4 MS5
[因点击阅读说明文件](#)
-
-  显微镜测量软件 HiViewSetup 1.4 for windows
支持: S4 X4 W01 DM3 DM4 DM7 DM8 DM9 MS1 MS2 MS3 MS4 MS5
[因点击阅读说明文件](#)
-
-  视频预览软件 Amcap v3.0.9 for windows
支持: W01 DM1 DM2 DM3 DM4 DM7 DM8 DM9 MS1 MS2 MS3 MS4 MS5
[因点击阅读说明文件](#)
-

- ② Windows端请在“Microsoft Store”搜索“HiView”下载如图(“”), 也可使用电脑自带相机(如图“”)观察; (适用于: Windows 8, Windows 10, Windows 11及以上)
- ③ Mac系统为 Mac OS x 10.5 或更高时, 请在“APP Store”搜索“HiView”下载, 也可使用Photo Booth (如图“”)观看。

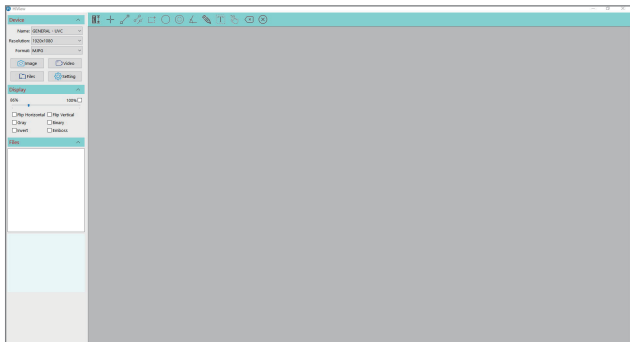
• 连接步骤

第一步：通过 Type-C 数据线连接电脑和显微镜；

第二步：显微镜开机，出现弹窗，选择“PC摄像”模式；

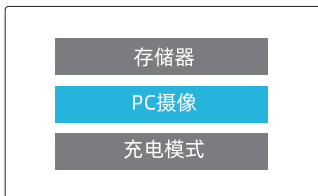


第三步：打开Hiview，即可观看图像，此时拍照/录像文件会自动保存在电脑磁盘中。（注：连接电脑观看图像时，请确认使用的是带数据传输功能的线）



• USB模式介绍

通过USB线将设备与电脑相连时，设备的模式有存储器/PC摄像/充电模式三种模式可供用户选择。



- ① **存储器**：从电脑端进入显微镜存储器，可以查看并处理当前TF卡内的图片和视频文件，此时显微镜仅开/关机键和下选择键（调节灯光）可用。
- ② **PC 摄像**：选择该模式后，可通过电脑相机软件，获得更大倍数的图像，此时显微镜仅开/关机键和下选择键（调节灯光）可用。
- ③ **充电模式**：当显微镜电量不足，可边充电边使用显微镜，用Type-c数据线将显微镜和电脑端连接，显微镜开机，选择充电模式，即可进入充电状态。（注：也可使用日常手机充电器、电脑、充电宝对显微镜进行充电。）

4. 产品参数

项目	参数
产品名称	HM020
屏幕	2.0寸高清IPS屏
CMOS尺寸	1/4'
拍照分辨率	16M, 12M, 10M, 8M, 5M, 3M, 2MHD
图片格式	jpg
光源	8颗LED灯（白灯和紫灯各4颗）
对焦模式	手动对焦
数码变焦	支持
白平衡	自动
曝光	自动
PC操作系统	Windows xp,win7,win8.1,win10,Mac OS x 10.5或更高
镜头结构	4P+IR
光圈	F4.5
镜头视角	20°
接口及信号传输方式	Type C/usb2.0
操作温度	-10℃ ~ +55℃
工作湿度	30%~85%Rh
功耗	260mA,1.3W
电池容量	500mAH, 3.7V
工作时间	1.5H
充电时间	1H
支持语言	12种语言：英语，葡萄牙语，简体中文，日语，法语，德语，韩语，意大利语，荷兰语，俄语，西班牙语，阿拉伯语

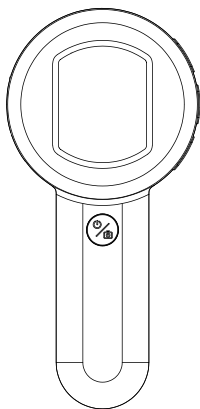
5. 注意事项

- TF卡需选用传输速度为C10的，若使用传输速度低于C10的卡，使用时可能会出现图片、视频存储不成功等故障。
- 请勿将显微镜放置在阳光直射的地方，请避免雨淋或潮湿环境，以免引起设备故障。
- 请勿将显微镜放置在热源或火源附近，如电炉、微波炉、烤箱、火炉等可能产生高温的环境。
- 请勿修改电池、插入异物、浸入水中或其他物体，避免过热、着火或爆炸。
- 请避免将显微镜存放在有跌落风险的场所，跌落可能造成显微镜内部镜头偏差或其他构件的损坏，以及其他不可修复的损坏。
- 如发生异常现象，请联系售后部门进行检修。私自拆解显微镜将不享受保修服务，并有可能导致不可修复的损坏。

如有疑问，请与本公司联系
最终解释权，归本公司所有

2.0-inch Handheld Microscope

Model: HM020



User Manual V3.0

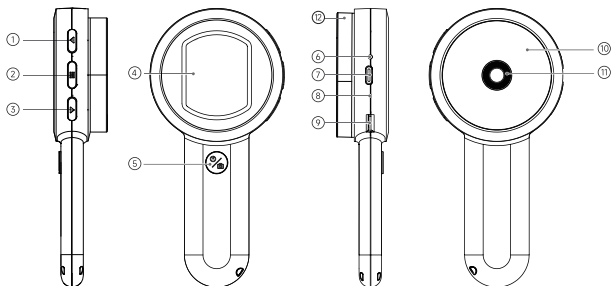
Please read this user manual carefully and keep it for future reference.

Contents

1. Parts Description.....	03
Functions introduction.....	03
2. Interface Introduction.....	05
Menu mode.....	05
Function introduction.....	06
3. Work with PC.....	07
Software download.....	07
Operating steps.....	08
USB Mode Introduction.....	09
4. Specifications.....	10
5. Warm Tips.....	11

1.Parts Description

Notice: The picture is for reference only, please refer to the actual object



• Functions introduction

Part	Function
1	Up button
2	Menu button
3	Down button
4	Screen
5	Power/Photo/Confirm button
6	Indicator light
7	Type-C interface
8	Reset button
9	TF card slot
10	LED lights
11	Camera
12	Transparent cover

Up button: In Settings or albums, it's select button; When previewing the image, it can be digitally zoom in.

Menu button: Short press to enter the Menu interface.

Down button: In Settings or albums, it's select button. In preview mode, short press Down button you can switch between white and purple light.

Screen: 2.0-inch IPS screen.

Power/Photo/Confirm button: Long press for 3 seconds to turn on/off; In Preview mode, press to take photo; In Setting mode, press to confirm.

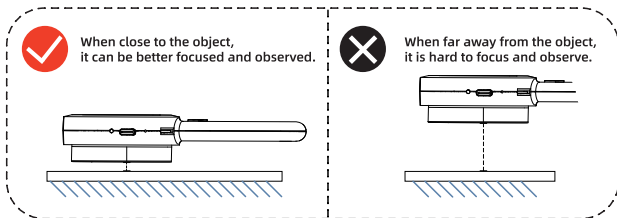
Indicator light: After powering on, the indicator is long bright blue. After powering off, the indicator is off; The indicator light is red long after charging, green long after full.

Type-C interface: Standard USB2.0 interface, this interface supports charging and data transfer.

Reset button: When the microscope is abnormal, poke this hole with a fine pointed object to force the power off.

TF card slot: Support maximum 32G memory card (Note: please use C10 high-speed card)

LED Lights: There are two sets of lights: white light and UV light, which can be switched.

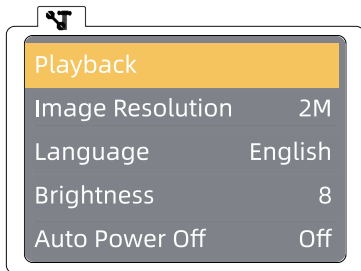


2.Interface Introduction

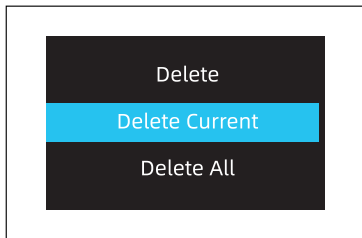
(Note: Before using the microscope, to ensure better storage of image files, please insert a TF card into the magnifier)

• Menu mode

Short press the Menu button on the microscope, you can enter the Menu interface, as shown in the figure below:



When viewing files in the album, long-press the menu button to enter the Menu interface, short-press the menu button to Delete Current/ Delete All files, as shown in the figure below:



• Function introduction

Playback: You can view the pictures that have been taken.

Image resolution: 16M, 12M, 10M, 8M, 5M, 3M, 2MHD

Language: Set Microscope language.(English, Portuguese, Simplified Chinese, Japanese, French, German, Korean, Italian, Dutch, Russian, Spanish, Arabic.)

Brightness: Set 8 levels of screen brightness.

Auto Power-off: After selecting auto shutdown time, the microscope will shut down automatically when no one is operating; no auto shutdown, please select "Shut".

Screen savers: Set the screen to extinguish.

Format: This operation will delete all data in the TF card. (Note: It will not be recovered after deletion, please operate carefully)

Default Setting: Restore factory settings.

Version: Check the current firmware version.




3.Work with PC




• Software download

Note: The following 3 methods can be downloaded, please choose the appropriate version according to your computer system.

- ① Please download the applicable software from the following website:
<http://soft.hvscam.com> (Suitable for: Windows 7, Windows 8.1, Windows 10, Windows 11 and Mac))

 简体中文 |  English

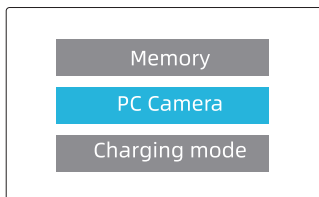
-  HiViewSetup 1.4 for mac
Support: S4 X4 W01 DM3 DM4 DM7 DM8 DM9 MS1 MS2 MS3 MS4 MS5
[Click to read the instructions](#)
-  HiViewSetup 1.4 for windows
Support: S4 X4 W01 DM3 DM4 DM7 DM8 DM9 MS1 MS2 MS3 MS4 MS5
[Click to read the instructions](#)
-  Amcap v3.0.9 for windows
Support: W01 DM1 DM2 DM3 DM4 DM7 DM8 DM9 MS1 MS2 MS3 MS4 MS5
[Click to read the instructions](#)

- ② For Windows, search for “HiView” in “Microsoft Store” () ; you can also use Camera () to view. (Suitable for: Windows 8, Windows 10, Windows 11 and above)
- ③ For Mac OS x 10.5 or above, search for “HiView” in “App Store”, you can also use Photo Booth () to view.

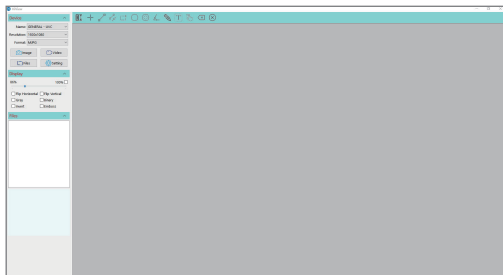
• Operating steps

Step 1. Connect the microscope to the computer via a Type-C cable.

Step 2. Long press the microscope power button to turn on, and the computer side of the successful connection screen pop-up window: Memory/PC Camera/Charging Mode three modes, please select the "PC Camera" mode.

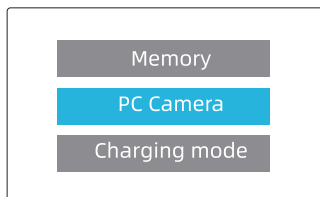


Step 3. Run Hiview, you can watch the image, at this time the photo / video files will be automatically saved in the computer disk. (Note: When connecting to a computer to watch images, please make sure you are using a cable with data transfer function)



• USB Mode Introduction

When the device is connected to the computer through a USB cable, the device can be used in Memory /PC Camera / Charging mode.



- ① Memory : Enter the microscope memory from the computer side, you can view and process the current picture files in the TF card, at this time the microscope only Power button and Down button (adjust lights) available.
- ② PC Camera: After selecting this mode, you can get a larger magnification of the image through the computer camera software, at this time the microscope only Power button and Down button (adjust lights) available.
- ③ Charging Mode: When the microscope is low on power, you can use the microscope while charging, use Type-C data cable to connect the microscope and the computer side, the microscope is turned on, select Charging Mode, you can enter the charging state.

(Note: you can also use daily cell phone charger, computer, power bank to charge the microscope)

4.Specifications

Item	Specifications
Product Name	HM020
Screen	2.0-inch IPS screen
CMOS Size	1/4"
Photo Resolution	16M, 12M, 10M, 8M, 5M, 3M, 2MHD
Picture Format	jpg
Illuminant	8 LED lights (four white lights and four purple lights)
Focusing Mode	Manual
Digital Zoom	Supported
White balance	Auto
Exposure	Auto
PC Operating System	Win xp,Win7, Win8.1, Win10, Mac OS x 10.5 or higher
Lens Structure	4P+IR
Aperture	F4.5
Lens angle of view	20°
Interface and Signal Transmission Mode	Type C/usb2.0
Operating Temperature	-10°C ~ +55°C
Operating Humidity	30%~85%Rh
Power Dissipation	260mA,1.3W
Battery capacity	500mAH, 3.7V
Working time	1.5H
Charging time	1H
Language	English, Portuguese, Simplified Chinese, Japanese, French, German, Korean, Italian, Dutch, Russian, Spanish, Arabic.

5. Warm Tips

- TF card with a minimum transfer speed of C10 is recommended. If a card with a transfer speed lower than C10 is used, there may be issues such as unsuccessful storage of photos during use.
- Please avoid placing the microscope in direct sunlight and refrain from exposing it to rain or humid environments to prevent equipment malfunctions.
- Do not place the microscope near a source of heat or fire, such as an electric stove, microwave oven, oven, stove, etc., where high temperatures can be generated.
- Do not modify the battery, insert foreign objects, immerse in water or expose to other substances, in order to prevent overheating, ignition, or explosion.
- Avoid storing the microscope in a place where there is a risk of falling, which may cause lens deviation or damage to other components inside the microscope, as well as other irreparable damage.